

SecurityLINK UHPLC Connections in a Click

The SecurityLINK UHPLC fingertight fitting system simplifies your system and column connections and provides consistent performance with torque limiting technology that prevents column damaging overtightening.

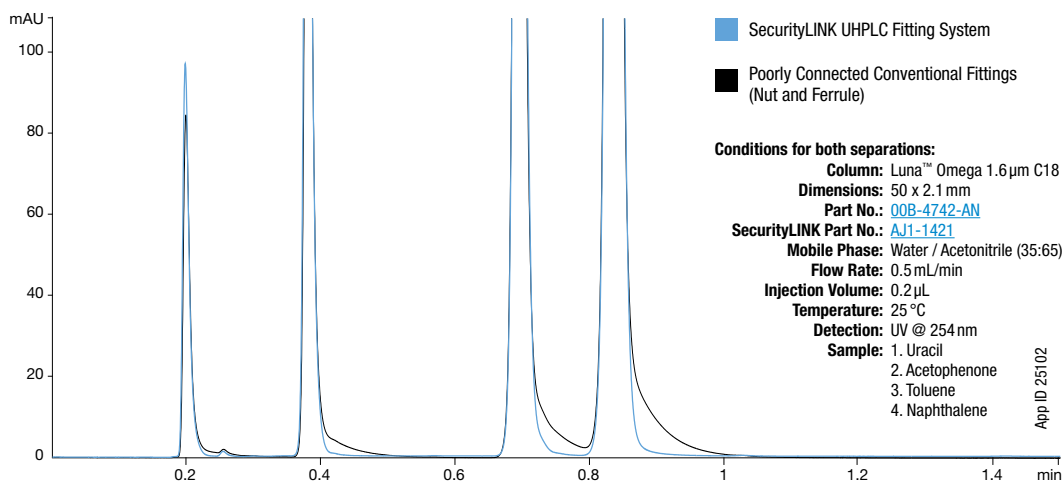
SecurityLINK UHPLC Fittings

- No tools required for quick and easy installation
- Fitting self-adjusts at column inlet to ensure zero dead-volume for better chromatographic results
- Torque limiting technology prevents system and column port damage
- UHPLC and HPLC compatibility: pressure rated to 19000 psi (1310 bar)



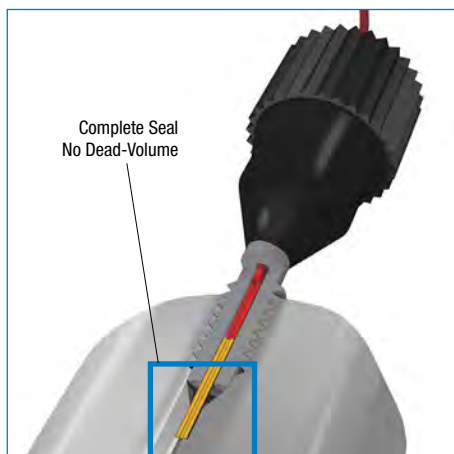
SecurityLINK vs. Poorly Connected Conventional Fittings

Poorly connected fittings are often the causes of carryover, band broadening, and peak tailing. SecurityLINK offers zero dead-volume connections every time.



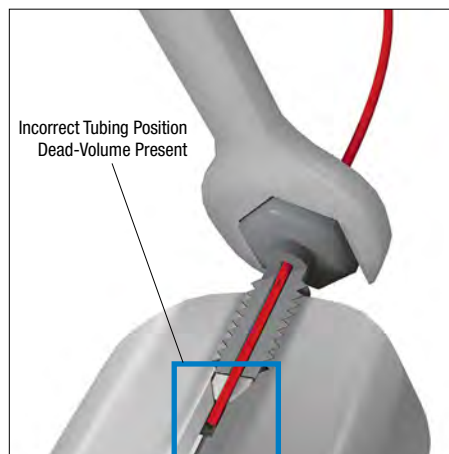
SECURITYLINK | UHPLC

SecurityLINK UHPLC Fitting System



VS.

Poorly Connected Conventional Fittings (Nut and Ferrule)



Installation Instructions

1. Insert SecurityLINK UHPLC fitting into column port



2. Fingertighten until first "CLICK" feedback is received. Connection Complete!



Ordering Information

PEEKsil™



PEEKsil Double-Sided 10-32 Fittings for 1/16 in. Ports

Part No.	ID (µm)	Length (mm)
AJ1-2111	25	100
AJ1-2121	25	150
AJ1-2141	25	250
AJ1-2151	25	300
AJ1-2171	25	500
AJ1-2191	25	750
AJ1-21A1	25	1000
AJ1-2211	50	100
AJ1-2221	50	150
AJ1-2231	50	200
AJ1-2241	50	250
AJ1-2251	50	300
AJ1-2271	50	500
AJ1-2291	50	750
AJ1-22A1	50	1000
AJ1-2321	75	150
AJ1-2341	75	250
AJ1-2371	75	500
AJ1-23A1	75	1000
AJ1-2411	100	100
AJ1-2421	100	150
AJ1-2441	100	250
AJ1-2471	100	500
AJ1-24A1	100	1000

PEEKsil



PEEKsil Single-Sided Fittings 1/32 in. OD PEEKsil Tubing with One 10-32 Fitting for 1/16 in. Ports, and One Side with No Fitting

Part No.	ID (µm)	Length (mm)
AJ1-2124	25	150
AJ1-2174	25	500
AJ1-2194	25	750
AJ1-21A4	25	1000
AJ1-21B1	25	1500
AJ1-2224	50	150
AJ1-2274	50	500
AJ1-2294	50	750
AJ1-22A4	50	1000

SecurityLINK tubing material includes a sleeve that provides: ID, length and part number information.



The "CLICK" Feedback indicates the SecurityLINK Connection is Secure! This Prevents Overtightening & Saves Your Column.

Phenomenex Column/Tubing ID Recommendation Chart

	Nano	Microbore	Analytical			Semi-Prep		
Column ID	0.05 - 0.1 mm (50 µm - 100 µm)	0.3 - 0.5 mm (300 µm - 500 µm)	1 mm	2.1 mm	3 mm	4.6 mm	7.8 mm	9.0 - 16.0 mm
Tubing ID	25 µm	50 µm	50 µm - 75 µm	100 µm	100 µm	100 µm	120 µm	254 µm

PEEK-Lined Stainless Steel



PEEK-Lined Stainless Steel Double-Sided 10-32 Fittings for 1/16 in. Ports

Part No.	ID (µm)	Length (mm)
AJ1-3121	25	150
AJ1-3141	25	250
AJ1-3161	25	350
AJ1-3171	25	500
AJ1-3181	25	600
AJ1-3221	50	150
AJ1-3241	50	250
AJ1-3261	50	350
AJ1-3271	50	500
AJ1-3281	50	600
AJ1-3321	75	150
AJ1-3341	75	250
AJ1-3361	75	350
AJ1-3371	75	500
AJ1-3381	75	600
AJ1-3421	100	150
AJ1-3441	100	250
AJ1-3461	100	350
AJ1-3471	100	500
AJ1-3481	100	600

Stainless Steel



Stainless Steel Double-Sided 10-32 Fittings for 1/16 in. Ports

Part No.	ID (µm)	Length (mm)
AJ1-14A1	100	1000
AJ1-1411	100	100
AJ1-1414	100	100
AJ1-1421	100	150
AJ1-1441	100	250
AJ1-1461	100	350
AJ1-1471	100	500
AJ1-1481	100	600
AJ1-15A1	125	1000
AJ1-1521	125	150
AJ1-1541	125	250
AJ1-1561	125	350
AJ1-1571	125	500
AJ1-1581	125	600
AJ1-1611	254	100
AJ1-1621	254	150
AJ1-1641	254	250
AJ1-1661	254	350
AJ1-1671	254	500
AJ1-1681	254	600