

特長

完全ボール型による点接触で固定するタイプです。

用途

工作機器・治工具・各種金型・試験機等

仕様

ボール部硬度：HRC56~60 (SCSS)

HRC55 (SCS)

注意事項

ばねによるストロークはありません。

Characteristic

Clamp the subject at a point with its perfectly ball-shaped contact area.

Application

Machine tools / Jig sand tools / Various kinds of metal molds / Testing devices, etc.

Specification

Hardness of the Bal : I HRC56~60 (SCSS)

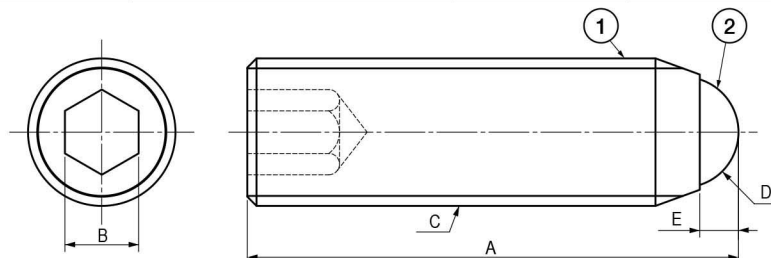
HRC55 (SCS)

Note

No stroke caused by a spring.

■部品表 Parts List

部番 No.	部品名 Part Name	SCS (スチール製) SCS (Steel)		SCSS (ステンレス製) SCSS (Stainless Steel)		数 Quantity
		材質 Material	処理 Finish	材質 Material	処理 Finish	
1	本体 Body	SCM435	四三酸化鉄皮膜 (黒) Black Oxide	SUS303	—	1
2	ボール Ball	SUJ2	—	SUS440	—	1



寸法・仕様表 Size List & Specification SCS (スチール製 Steel) 寸法・仕様表 Size List & Specification SCSS (ステンレス製 Stainless Steel)

※重荷重用もごさいます。 Custom-made product for heavy load use is available.

※重荷重用もごさいます。 Custom-made product for heavy load use is available.

型番 Model No.	A	B	C	D	E	自重 (g) Net Weight (g)
TM-SCS-M4×6-R	6.5					0.4
TM-SCS-M4×10-R	10.5	2	M4	φ2.5	(0.75)	0.7
TM-SCS-M4×16-R	16.5					1
TM-SCS-M5×8-R	8.6					0.8
TM-SCS-M5×12-R	12.6	2.5	M5	φ3	(0.95)	1.3
TM-SCS-M5×20-R	20.6					2.3
TM-SCS-M6×10-R	10.8					1.5
TM-SCS-M6×16-R	16.8	3	M6	φ4	(1.25)	2.5
TM-SCS-M6×25-R	25.8					4
TM-SCS-M8×10-R	11.2					2.5
TM-SCS-M8×12-R	13.2					3.2
TM-SCS-M8×20-R	21.2	4	M8	φ5.5	(1.7)	5.7
TM-SCS-M8×30-R	31.2					9
TM-SCS-M10×12-R	13.7					5
TM-SCS-M10×16-R	17.7					7
TM-SCS-M10×25-R	26.7	5	M10	φ7	(2.3)	11
TM-SCS-M10×35-R	36.7					16
TM-SCS-M12×16-R	18					10
TM-SCS-M12×20-R	22					12.5
TM-SCS-M12×30-R	32	6	M12	φ8.5	(2.75)	20
TM-SCS-M12×40-R	42					28
TM-SCS-M16×20-R	23.3					22
TM-SCS-M16×25-R	28.3					28
TM-SCS-M16×35-R	38.3	8	M16	φ12	(4.2)	41
TM-SCS-M16×50-R	53.3					48

型番 Model No.	A	B	C	D	E	自重 (g) Net Weight (g)
TM-SCSS-M4×6-R	6.5					0.4
TM-SCSS-M4×10-R	10.5	2	M4	φ2.5	(0.75)	0.7
TM-SCSS-M4×16-R	16.5					1
TM-SCSS-M5×8-R	8.6					0.8
TM-SCSS-M5×12-R	12.6	2.5	M5	φ3	(0.95)	1.3
TM-SCSS-M5×20-R	20.6					2.3
TM-SCSS-M6×10-R	10.8					1.5
TM-SCSS-M6×16-R	16.8	3	M6	φ4	(1.25)	2.5
TM-SCSS-M6×25-R	25.8					4
TM-SCSS-M8×10-R	11.2					2.5
TM-SCSS-M8×12-R	13.2					3.2
TM-SCSS-M8×20-R	21.2	4	M8	φ5.5	(1.7)	5.7
TM-SCSS-M8×30-R	31.2					9
TM-SCSS-M10×12-R	13.7					5
TM-SCSS-M10×16-R	17.7					7
TM-SCSS-M10×25-R	26.7	5	M10	φ7	(2.3)	11
TM-SCSS-M10×35-R	36.7					16
TM-SCSS-M12×16-R	18					10
TM-SCSS-M12×20-R	22					12.5
TM-SCSS-M12×30-R	32	6	M12	φ8.5	(2.75)	20
TM-SCSS-M12×40-R	42					28
TM-SCSS-M16×20-R	23.3					22
TM-SCSS-M16×25-R	28.3					28
TM-SCSS-M16×35-R	38.3	8	M16	φ12	(4.2)	41
TM-SCSS-M16×50-R	53.3					48