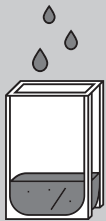


Liquid & Powder Adapter

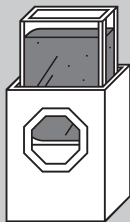
Use instructions

1



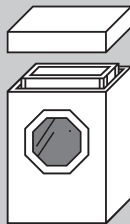
Fill the glass cuvette with your liquid or powder to about 1-2 mm from the top

2



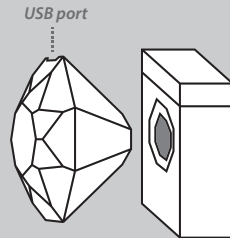
Carefully place the cuvette into the adapter base

3



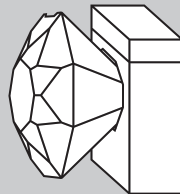
Place the lid onto the top of the adapter (this is necessary to block out all ambient light)

4



Firmly hold your Nix device onto the octagonal opening (the USB charging port of the Nix device must face up)

5



Perform your scan, ensuring the device has good contact with the cuvette

PLEASE NOTE: This adapter is measured from the **side** to eliminate the formation of bubbles. Do not tip onto its back like the low-volume adapter. Keep upright at all times. If you have any questions, please contact us at qc.support@nixsensor.com