

PDIA6 Rabbit pAb

Catalog No.	A7055	Category	Polyclonal Antibodies
Applications	WB, IHC, IF	Observed MW	48kDa
Cross-reactivity	Human, Mouse, Rat	Calculated MW	47kDa/48kDa/53kDa

Immunogen Information

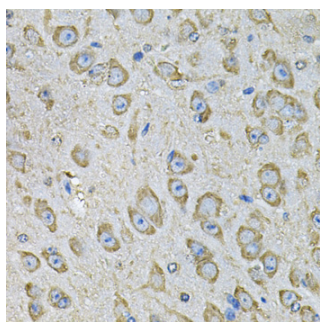
Immunogen	Recombinant fusion protein containing a sequence corresponding to amino acids 20-300 of human PDIA6 (NP_005733.1).
Gene ID	10130
Swiss prot	Q15084
Synonyms	PDIA6;ERP5;P5;TXNDC7

Product information

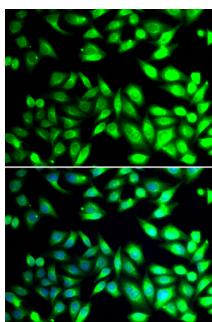
Source	Rabbit
Isotype	IgG
Purification method	Affinity purification
Storage	Store at -20°C. Avoid freeze / thaw cycles. Buffer: PBS with 0.02% sodium azide, 50% glycerol, pH7.3.

Background

This gene encodes a member of the disulfide isomerase (PDI) family of endoplasmic reticulum (ER) proteins that catalyze protein folding and thiol-disulfide interchange reactions. The encoded protein has an N-terminal ER-signal sequence, two catalytically active thioredoxin (TRX) domains, a TRX-like domain, and a C-terminal ER-retention sequence. This protein inhibits the aggregation of misfolded proteins and exhibits both isomerase and chaperone activity. Alternative splicing results in multiple transcript variants encoding different isoforms.



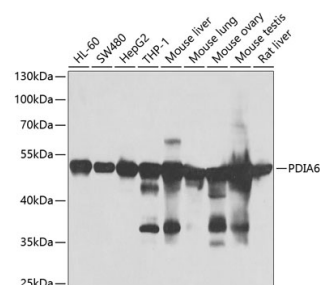
Immunohistochemistry of paraffin-embedded mouse brain using PDIA6 Antibody (A7055) at dilution of 1:100 (40x lens).



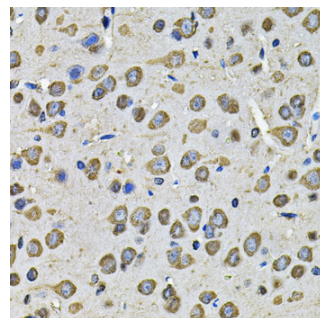
Immunofluorescence analysis of U2OS cells using PDIA6 antibody (A7055). Blue: DAPI for nuclear staining.

Recommended Dilutions

WB	1:500 - 1:2000
IHC	1:50 - 1:200
IF	1:50 - 1:100



Western blot analysis of extracts of various cell lines, using PDIA6 antibody (A7055) at 1:1000 dilution. Secondary antibody: HRP Goat Anti-Rabbit IgG (H+L) (AS014) at 1:10000 dilution. Lysates/proteins: 25ug per lane. Blocking buffer: 3% nonfat dry milk in TBST. Detection: ECL Basic Kit (RM00020). Exposure time: 60s.



Immunohistochemistry of paraffin-embedded rat brain using PDIA6 Antibody (A7055) at dilution of 1:100 (40x lens).