

特長

錠前用の止め金具です。

用途

TL-96シリーズ・TL-247シリーズ・TL-245・TL-230等

Characteristic

Cam for locks.

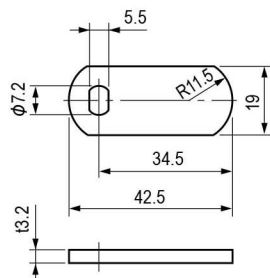
Application

For TL-96 series, TL-247 series. TL-245, TL-230, etc.

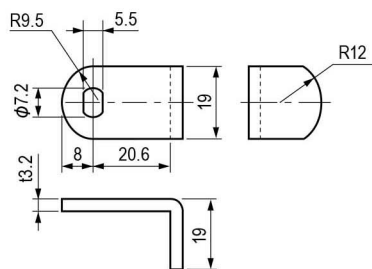
材質と処理 Material & Finish

材質 Material	処理 Finish
SPCC	3価クロメート Trivalent Chromate Treatment

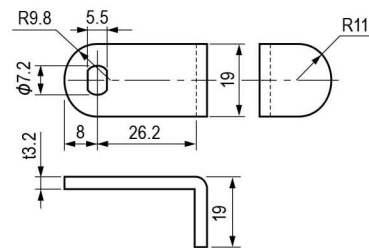
TL-96K-1



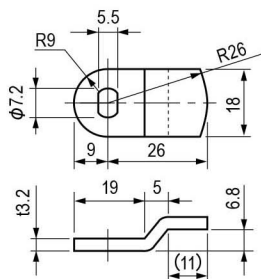
TL-96K-2



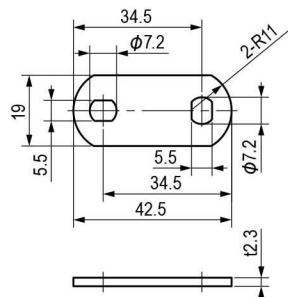
TL-96K-3



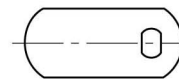
TL-96K-4



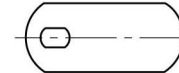
TL-96K-7



TL-96K-5



TL-96K-6



※品番5・6は、取付穴位置以外品番7と同寸法になります。

※ The dimension of TL-96K-5 and -6 is the same as that of TL-96K-7 except for the position of installation hole.

仕様 Specification

型番 Model No.	自重(g) Net Weight (g)
TL-96K-1	17.5
TL-96K-2	19
TL-96K-3	21
TL-96K-4	14.5
TL-96K-5	12
TL-96K-6	
TL-96K-7	