

## NSA2 Rabbit pAb

|                         |                   |                      |                       |
|-------------------------|-------------------|----------------------|-----------------------|
| <b>Catalog No.</b>      | A14475            | <b>Category</b>      | Polyclonal Antibodies |
| <b>Applications</b>     | WB                | <b>Observed MW</b>   | 37kDa                 |
| <b>Cross-reactivity</b> | Human, Mouse, Rat | <b>Calculated MW</b> | 30kDa                 |

### Immunogen Information

|                   |  |
|-------------------|--|
| <b>Immunogen</b>  | Recombinant fusion protein containing a sequence corresponding to amino acids 1-260 of human NSA2 (NP_055701.1). |
| <b>Gene ID</b>    | 10412  |
| <b>Swiss prot</b> | O95478   |
| <b>Synonyms</b>   | NSA2;CDK105;HCL-G1;HCLG1;HUSY-29;HUSY29;TINP1  |

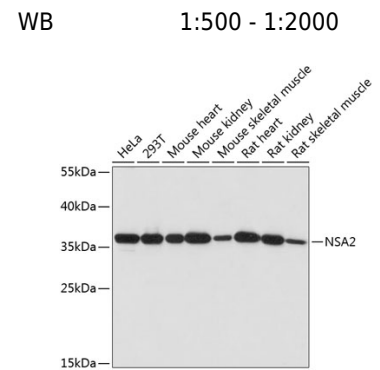
### Product information

|                            |  |
|----------------------------|--|
| <b>Source</b>              | Rabbit   |
| <b>Isotype</b>             | IgG  |
| <b>Purification method</b> | Affinity purification  |
| <b>Storage</b>             | Store at -20°C. Avoid freeze / thaw cycles.<br>Buffer: PBS with 0.02% sodium azide,50% glycerol,pH7.3. |

### Background

This gene encodes a nucleolar protein involved in cell cycle regulation and proliferation. This gene was identified based on sequence similarity to a highly conserved *Saccharomyces cerevisiae* gene encoding a pre-ribosomal protein, which is involved in large ribosomal subunit biogenesis. The encoded protein is found at elevated levels in diabetic nephropathy. Alternative splicing results in multiple transcript variants. Several related pseudogenes have been identified.

### Recommended Dilutions



Western blot analysis of extracts of various cell lines, using NSA2 antibody (A14475) at 1:1000 dilution. Secondary antibody: HRP Goat Anti-Rabbit IgG (H+L) (AS014) at 1:10000 dilution.  
Lysates/proteins: 25ug per lane.  
Blocking buffer: 3% nonfat dry milk in TBST.  
Detection: ECL Basic Kit (RM00020).  
Exposure time: 60s.