

## GPR55 Rabbit pAb

<b>Catalog No.</b>	A12890	<b>Category</b>	Polyclonal Antibodies
<b>Applications</b>	WB, IF	<b>Observed MW</b>	37kDa
<b>Cross-reactivity</b>	Mouse, Rat	<b>Calculated MW</b>	36kDa

### Immunogen Information

<b>Immunogen</b>	Recombinant fusion protein containing a sequence corresponding to amino acids 210-319 of human GPR55 (NP_005674.2).
<b>Gene ID</b>	9290
<b>Swiss prot</b>	Q9Y2T6
<b>Synonyms</b>	GPR55;LPIR1

### Product information

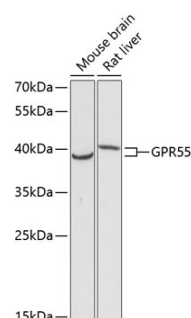
<b>Source</b>	Rabbit
<b>Isotype</b>	IgG
<b>Purification method</b>	Affinity purification
<b>Storage</b>	Store at -20°C. Avoid freeze / thaw cycles. Buffer: PBS with 0.02% sodium azide, 50% glycerol, pH7.3.

### Background

This gene belongs to the G-protein-coupled receptor superfamily. The encoded integral membrane protein is a likely cannabinoid receptor. It may be involved in several physiological and pathological processes by activating a variety of signal transduction pathways.

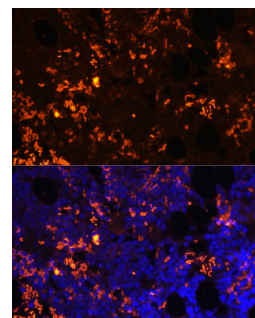
### Recommended Dilutions

WB	1:500 - 1:2000
IF	1:50 - 1:200



Western blot analysis of extracts of various cell lines, using GPR55 antibody (A12890) at 1:3000 dilution. Secondary antibody: HRP Goat Anti-Rabbit IgG (H+L) (AS014) at 1:10000 dilution.

Lysates/proteins: 25ug per lane.  
Blocking buffer: 3% nonfat dry milk in TBST.  
Detection: ECL Basic Kit (RM00020).  
Exposure time: 90s.



Immunofluorescence analysis of rat bone marrow cells using GPR55 antibody (A12890) at dilution of 1:100. Blue: DAPI for nuclear staining.