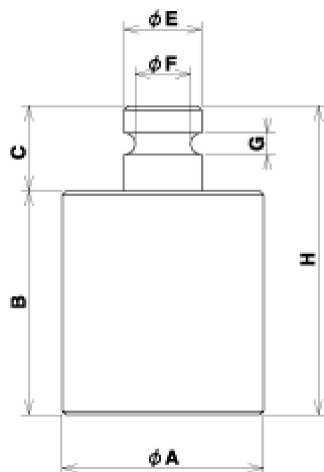


寸法図

(JIS B7609:2008による)



表す質量	A	B	C	H	E	F	G
20kg	145mm	142mm	82mm	225mm	56mm	40mm	28mm
10kg	112mm	116mm	66mm	182mm	48mm	36mm	21mm
5kg	90mm	94mm	50mm	144mm	34mm	25mm	15mm
2kg	65mm	73mm	29mm	102mm	28mm	24mm	8mm
1kg	52mm	57mm	24mm	80mm	21mm	17mm	7mm
500g	42mm	44mm	19mm	64mm	19mm	16mm	6mm
200g	32mm	31mm	13mm	45mm	14mm	11mm	4mm
100g	25mm	25mm	12mm	36mm	12mm	10mm	4mm
50g	20mm	20mm	7mm	28mm	8mm	7mm	3mm
20g	15mm	14mm	6mm	20mm	7mm	5mm	2mm
10g	13mm	10mm	5mm	14mm	6mm	5mm	2mm
5g	13mm	5mm	5mm	9mm	6mm	5mm	2mm
2g	10mm	3mm	4mm	7mm	4mm	4mm	1mm
1g	10mm	2mm	4mm	5mm	4mm	4mm	1mm
500mg~10mg	四角形の板状になります						

[編集](#)