

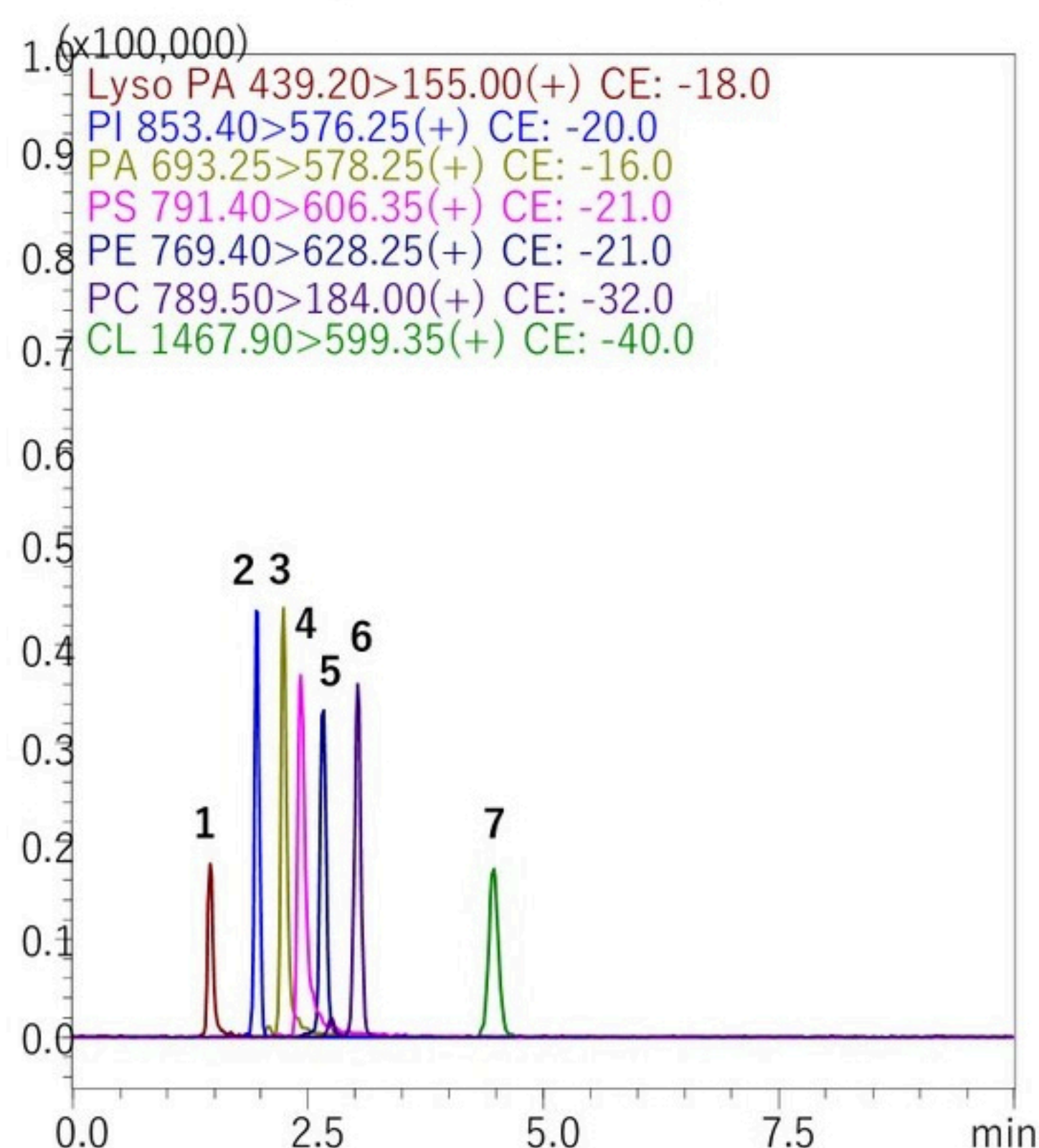
PhospholipidsのLC/MS分析

Conditions

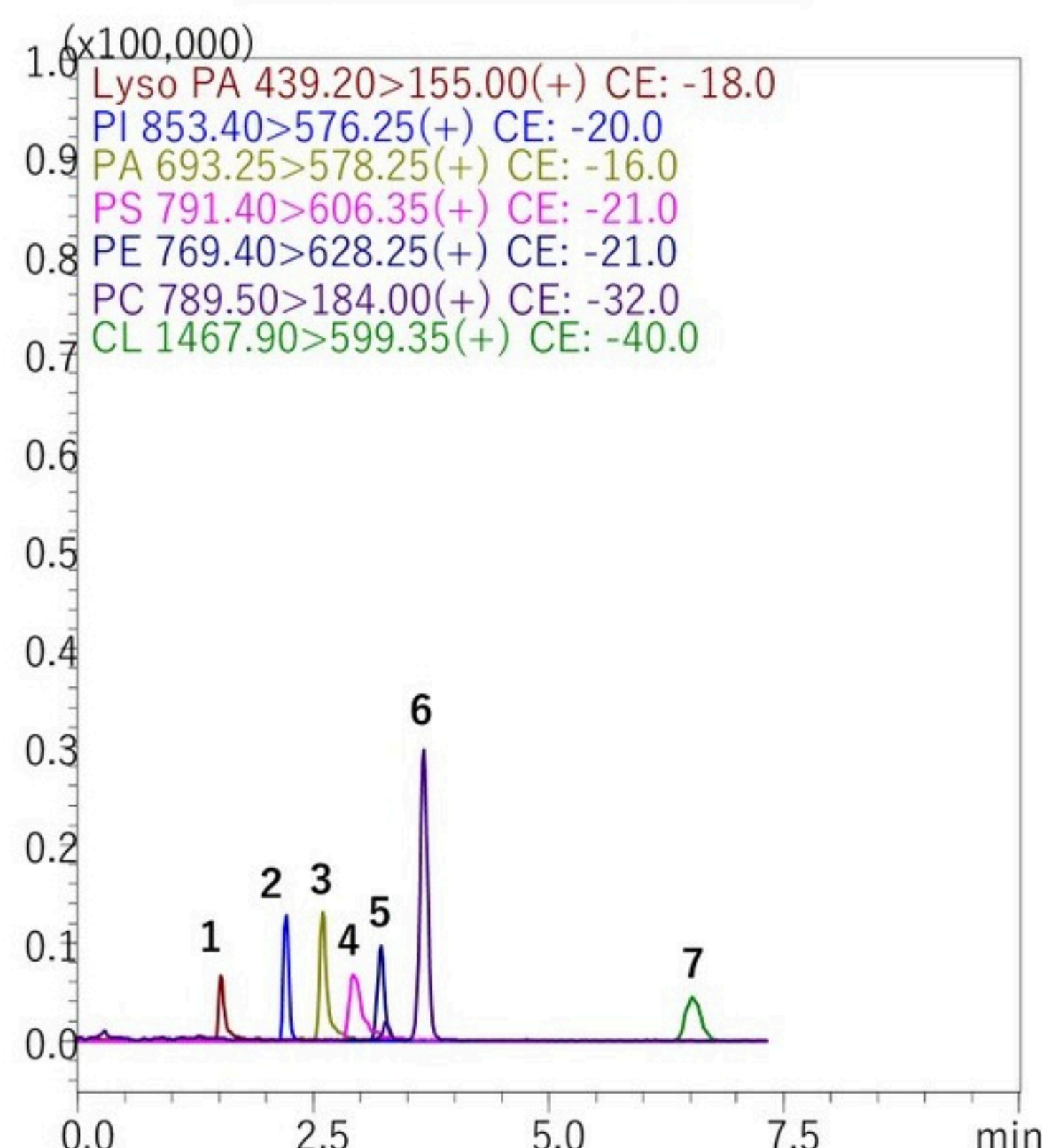
System : Nexera LCMS-8030 Plus
 Column : InertSustainSwift C18
 (3 μ m, 150 \times 2.1 mm I.D.)
 Eluent : 5 mM Ammonium Formate in CH₃OH
 Flow Rate : 0.3 mL/min
 Col. Temp. : 40 °C
 Detection : MS/MS (ESI, Positive, MRM)
 Inj. Vol. : 1 μ L

Sample : 1. LysoPhosphatidic acid (500 pg/ μ L)
 2. Phosphatidylinositol (100 pg/ μ L)
 3. Phosphatidic acid (100 pg/ μ L)
 4. Phosphatidylserine (100 pg/ μ L)
 5. Phosphatidylethanolamine (100 pg/ μ L)
 6. Phosphatidylcoline (50 pg/ μ L)
 7. Cardiolipin (500 pg/ μ L)

IM Column



ステンレスカラム

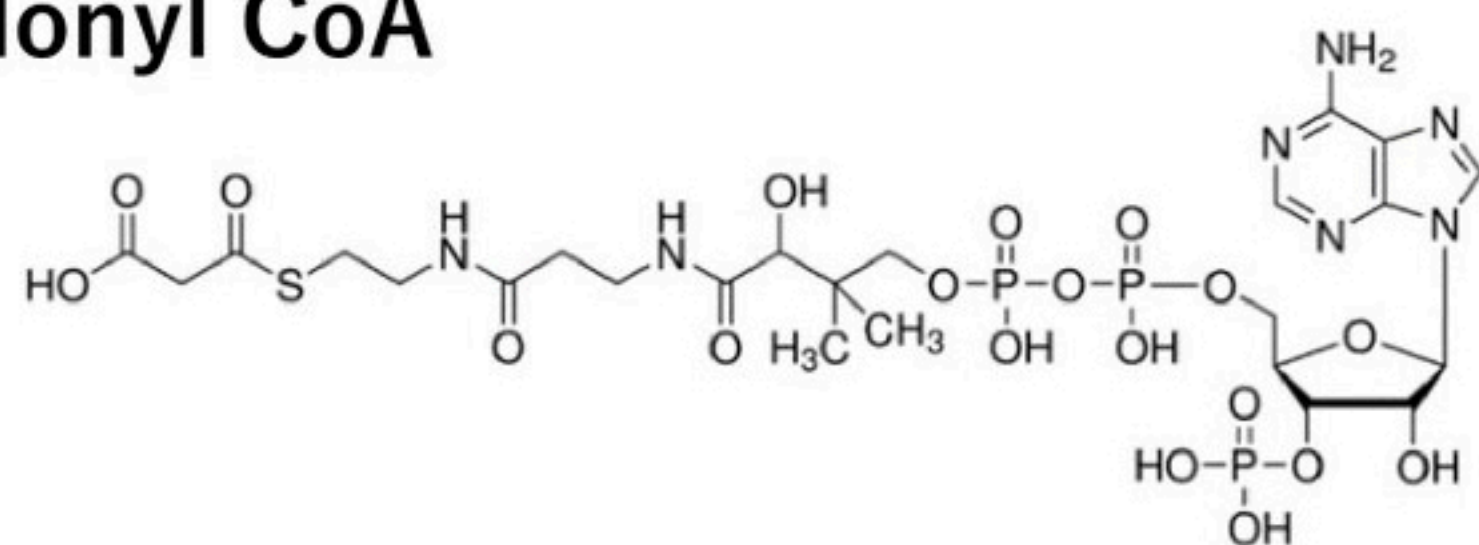


Coenzyme A compoundsのLC/MS分析

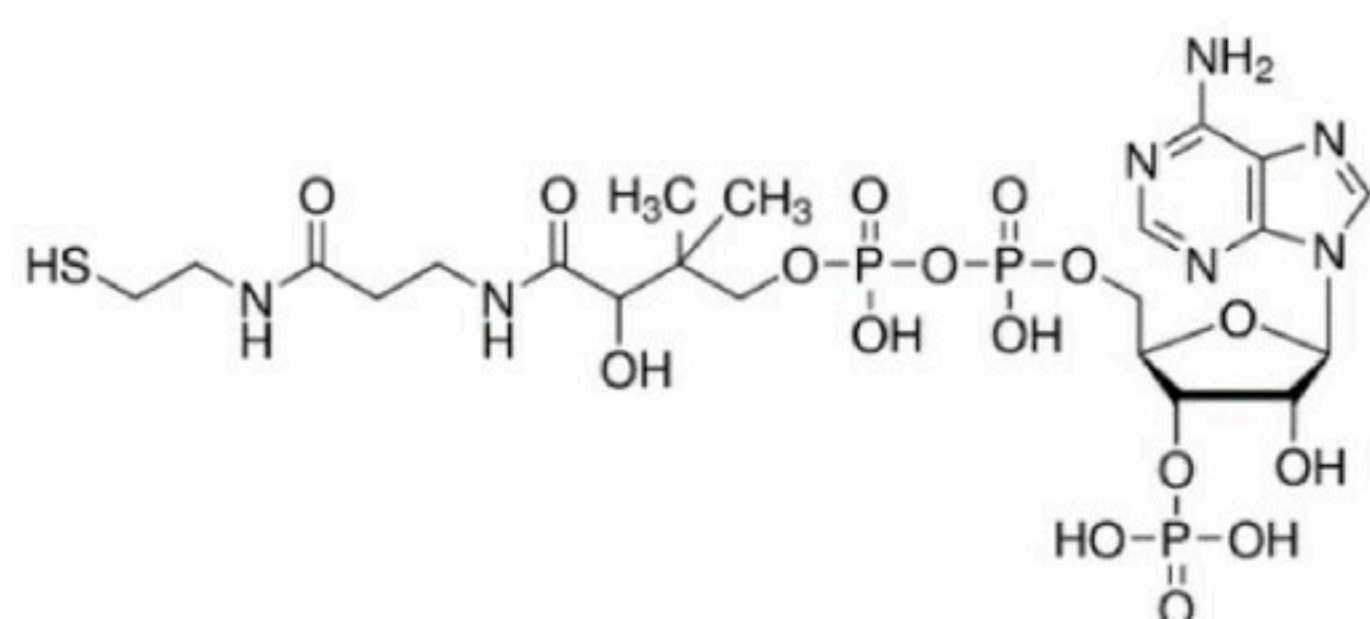
Conditions

System : LCMS-8030 Plus
 Column : IM Column InertSustain AQ-C18 (3 μ m, 150 \times 2.1 mm I.D.)
 Eluent : A) 5 mM HCOONH₄ in H₂O
 B) 5 mM HCOONH₄ in CH₃OH
 A/B = 97/3 - 5 min - 0/100 - 5 min - 0/100 - 0.1 min - 97/3, v/v
 Flow Rate : 0.2 mL/min
 Col. Temp. : 40 °C
 Detection : MS/MS (ESI, Positive, MRM)
 Inj. Vol. : 3 μ L
 Sample : 1. Malonyl CoA (0.5 mg/L)
 2. CoA (0.1 mg/L)
 3. Acetyl CoA (0.1 mg/L)

Malonyl CoA



CoA



Acetyl CoA

