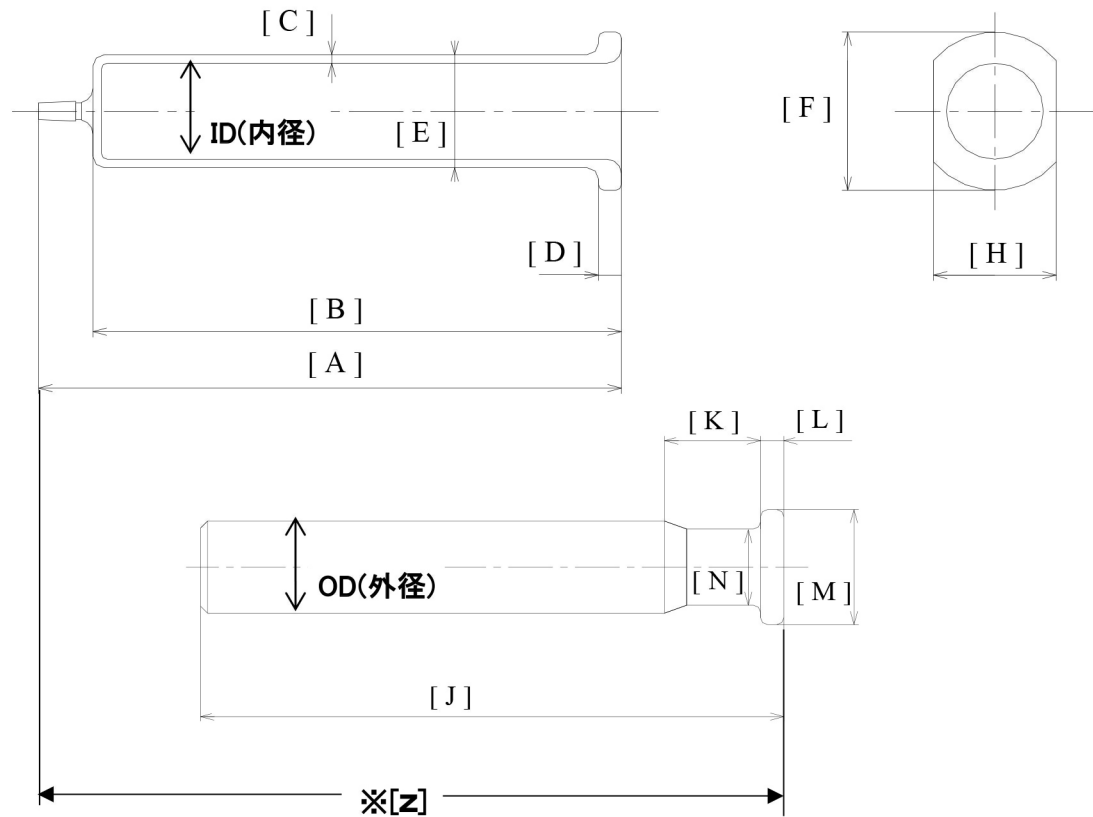


■白硬注射器 ガラス先



※内筒を一番押込んだ状態の寸法

単位(mm)

容量	規格	A	B	C	D	E	ID	F	H	J	K	L	M	N	OD	Z
2-5636-01	1ml	67	55.5 57.0	1.5 1.7	3.1 3.6	9.6 10.2	6.5	16.0 17.0	14.5 15.5	64.0 66.0	9.0 9.7	2.8 3.8	11.0 12.0	5.8 6.9	6.5	≒79
2-5636-02	2ml	69	56.0 57.5	1.2 1.5	3.1 3.6	12.1 12.7	9.5	17.0 19.0	15.0 17.0	66.0 68.0	11.0 11.7	3.0 4.0	13.8 14.8	7.4 8.5	9.5	≒82
2-5636-03	3ml	77	65.5 67.0	1.2 1.4	3.1 3.6	12.4 13.0	10.1	18.5 19.5	16.0 17.0	76.0 78.0	11.5 13.0	3.0 4.0	14.0 15.0	7.6 8.8	10.1	≒89
2-5636-04	5ml	85	74.0 75.5	1.3 1.5	3.2 3.7	15.1 15.7	12.4	21.5 23.0	20.0 21.0	85.0 87.0	12.0 13.5	3.2 4.2	16.7 17.9	9.4 11.0	12.4	≒100
2-5636-05	10ml	108	95.0 97.0	1.5 1.7	3.3 4.0	18.0 18.6	15.0	25.5 27.0	23.5 24.5	108.0 110.0	14.5 16.0	3.8 4.9	19.0 20.5	12.0 13.8	15.0	≒123
2-5636-06	20ml	128	114.5 116.5	1.8 2.0	4.3 5.1	22.6 23.3	18.9	32.0 32.8	29.0 29.8	131.0 133.0	17.5 19.0	4.3 5.8	24.0 25.5	15.0 16.8	18.9	≒146
2-5636-07	30ml	134	119.0 121.5	2.1 2.3	4.7 5.5	26.9 27.7	22.6	36.5 38.5	33.0 35.0	139.0 142.0	21.5 23.5	4.9 6.1	27.3 28.8	17.7 19.5	22.6	≒155
2-5636-08	50ml	165	152.0 154.5	2.3 2.6	5.5 6.5	30.0 31.0	25.3	41.5 43.0	39.0 41.0	173.5 176.5	23.0 25.0	5.9 7.5	31.5 33.0	20.8 22.6	25.3	≒195
2-5636-09	100ml	175	157.5 161.0	2.5 2.7	6.0 7.0	40.5 41.9	35.7	54.5 56.5	50.0 52.5	187.5 190.5	35.5 38.1	7.1 9.2	41.0 43.0	30.0 32.5	35.7	≒210

受注生産(返品不可)

2-5636-10	200ml	233	218.0 220.0	2.7 2.9	7.0 8.0	47.3 48.7	42.4	61.9 63.0	58.8 60.2	255.2 256.6	31.3 32.7	12.6 13.0	53.5 54.6	27.4 28.8	42.4	≒272
2-5636-11	300ml	260	242.0 247.0	3.0 3.5	8.0 8.5	52.0 57.0	49.0	66.0 71.0	64.5 69.5	277.0 282.0	32.0 37.0	13.0 13.5	56.0 61.0	-	49.0	≒295
2-5636-12	500ml	278	260.0 265.0	4.0 4.5	9.0 9.5	67.0 72.0	62.0	82.0 87.0	80.5 85.5	307.0 312.0	44.0 49.0	14.0 14.5	66.0 71.0	-	62.0	≒325
2-5636-13	1000ml	290	272.0 277.0	6.0 6.5	9.5 10.0	97.0 102.0	88.0	111.0 116.0	109.5 114.5	313.0 318.0	37.0 42.0	18.0 18.5	107.0 112.0	-	88.0	≒330

※ガラス製の為、上記寸法値と異なる場合がございます。