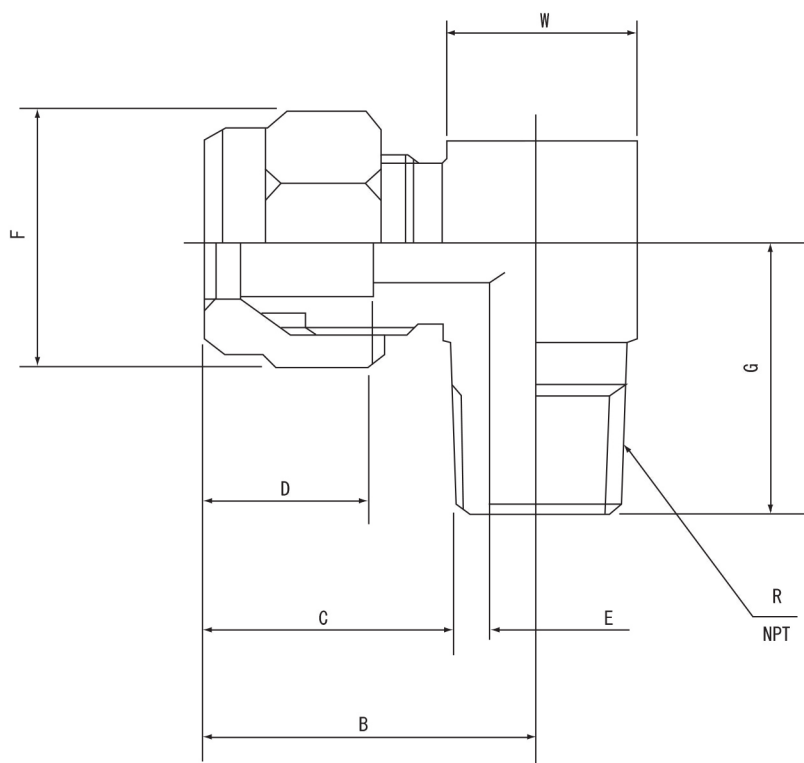


■外形寸法図



(単位：mm)

品番	型番	B	C	D	E	F	G	W	R
-01	30-3ME2-C	15	9	5	2	8	15	11	R1/8
-02	30-3ME4-C	16					20	14	R1/4
-03	30-6ME2-C	20	14	10	4	12	17	11	R1/8
-04	30-6ME4-C	21					21	14	R1/4
-05	30-6ME6-C	23					22	17	R3/8
-06	30-6ME8-C	25					28	22	R1/2
-07	30-10ME2-C	30	21	16	6	22	22	17	R1/8
-08	30-10ME4-C						26		R1/4
-09	30-10ME6-C						27	R3/8	
-10	30-10ME8-C	32	25	18	8	26	31	22	R1/2
-11	30-12.7ME6-C	36					28		R3/8
-12	30-12.7ME8-C				10		32	R1/2	